



OCTOBER 2025 MONTHLY UPDATE

Mary R. Harville, President and CEO

Fueling Imagination and Funding Education for all Kentuckians.

OCTOBER AT A GLANCE

- October sales totaled \$196.5 million, which is \$21.8 million or 12.5% more than last year at this time.
- Scratch-off sales were \$81.9 million, which is \$6.0 million or 8.0% more than last year at this time.
- Draw game sales totaled \$38.2 million, which is \$1.4 million or 3.7% more than last year at this time. Mega Millions sales accounted for most of this growth, fueled by a growing jackpot, which was \$750 million at month end.
- October's iLottery Instant Play sales were \$76.4 million, which is \$14.4 million or 23.2% more than last year at this time.

- President and CEO Mary Harville joined Kentucky Lottery Corporation Board Chair Dr. Tom Abell, Board Vice Chair Cammie Grant, and University of Kentucky's Vice President for Student Success Dr. Kirsten Turner to present the University of Kentucky a ceremonial check for the more than \$577 million the Lottery has funded in scholarships and grants for UK students and families since 1999.

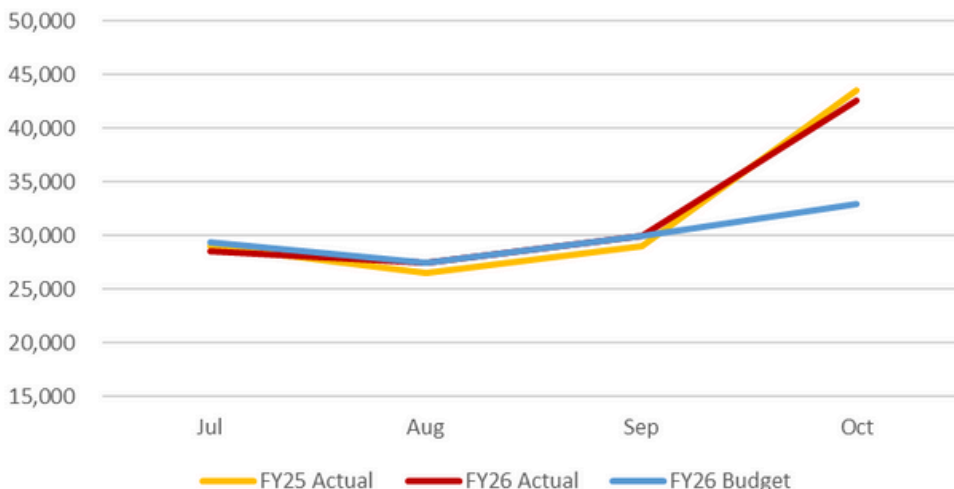


- Holiday scratch-offs are always a favorite for Kentucky Lottery players. They are seasonal, entertaining and make great gifts for family and friends who are 18 years of age and over. The Kentucky Lottery is proud to join Lotteries across the country and the Kentucky Council on Problem Gambling to support the annual Gift Responsibly Campaign.



- The Kentucky Lottery nears the completion of its roll out of new state-of-the-art equipment. All 3500 retail partners across the state will receive the newest, most streamlined technology that makes buying and selling lottery games easier and more efficient than ever.
- Retailers are receiving new terminals, ticket checkers, printers, and marketing monitors. A dual cellular network is replacing the satellite service for all retailers as well. In addition, 850 new vending machines are being placed in designated retail stores across the state.

Total Cash Transfers to the Commonwealth ('000s)



October Prior	43,519
October Actual	42,641
October Budget	32,900

	FY26 October 2025 ACTUAL	FY25 October 2024 ACTUAL	FY26 October 2025 BUDGET
Sales:			
Gross Instant at Retail	81,906	75,863	84,063
Gross Draw at Retail	35,235	34,442	34,286
iLottery	79,351	64,384	72,239
Ticket Sales	196,492	174,689	190,588
Prize Expense	149,103	128,932	142,295
Other Direct Costs	12,110	11,204	12,069
Gross Profit	35,279	34,553	36,224
Operating Expenses	3,355	3,305	3,738
Operating Income	31,924	31,248	32,486
Non-Operating Income	178	179	112
Net Income With Unclaimed Prizes	32,102	31,427	32,598
Unclaimed Prizes	(398)	(430)	(400)
Net Income	31,704	30,997	32,198

	FY26 YTD 10/31/25 ACTUAL	FY25 YTD 10/31/24 ACTUAL	FY26 YTD 10/31/25 BUDGET
Sales:			
Gross Instant at Retail	290,209	293,414	316,071
Gross Draw at Retail	152,470	142,679	140,086
iLottery	304,033	258,134	291,463
Ticket Sales	746,712	694,227	747,620
Prize Expense	557,567	512,684	557,135
Other Direct Costs	45,005	43,857	46,862
Gross Profit	144,140	137,686	143,623
Operating Expenses	13,177	12,961	14,375
Operating Income	130,963	124,725	129,248
Non-Operating Income	659	767	448
Net Income With Unclaimed Prizes	131,622	125,492	129,696
Unclaimed Prizes	(2,153)	(3,977)	(3,300)
Net Income	129,469	121,515	126,396

LOTTERY UPDATE



- Partnerships, sharing ideas and trends are at the heart of the lottery industry. President and CEO Mary Harville participated with other lottery leaders at the recent PGRI Public Gaming Conference to discuss the future of lottery games, like the multi-state game Powerball.

- The Lottery held player engagement events around the state recently thanks to the \$980 million Mega Millions jackpot run. These events help increase sales that directly impact the Lottery's mission of funding scholarships and grants.



@KYLOTTERY

KYLOTTERY.COM

FOR MORE INFORMATION:

Mary R. Harville
Kentucky Lottery President and CEO
(502) 560.1576
mary.harville@kylottery.com

